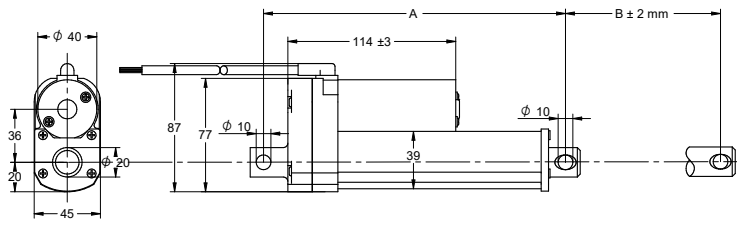


# DLB Series / 100 - 300mm / 500 - 2500N

## DRAWING (mm)



## PHOTO



## MODEL NO. DESIGNATION

DLB - VOLTAGE - REDUCTION - A - STROKE - IP65

Example: DLB-12-5-A-50-IP65

## ACTUATOR DATA

| Reduction                            | 10        | 20        | 30      | 40      | 50      |
|--------------------------------------|-----------|-----------|---------|---------|---------|
| Voltage (VDC)                        | 12/24     | 12/24     | 12/24   | 12/24   | 12/24   |
| Current at nominal dynamic load (A)  | 4.4/2.4   | 4.6/2.3   | 4.3/2.3 | 4.5/2.0 | 4.1/2.2 |
| Nominal dynamic load (N)             | 500       | 1000      | 1500    | 2000    | 2500    |
| Max. static load (N)                 | 1500      | 4500      | 4500    | 4500    | 4500    |
| Speed at nominal dynamic load (mm/s) | 18.6/18.7 | 10.4/10.7 | 6.8/7.2 | 5.1/5.7 | 4.4/4.4 |

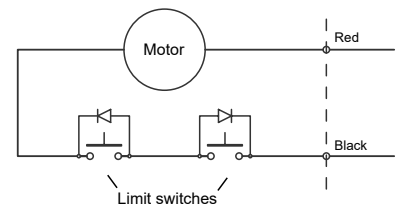
## ACTUATOR STROKE DATA

| Stroke length B (mm)            | 100    | 150    | 200    | 250    | 300    |
|---------------------------------|--------|--------|--------|--------|--------|
| Retracted length A (mm)         | 205    | 255    | 305    | 355    | 405    |
| Life time number single strokes | 40.000 | 26.600 | 20.000 | 16.000 | 13.300 |
| Weight (kg)                     | 1.07   | 1.15   | 1.24   | 1.35   | 1.44   |

## ACTUATOR FEATURES AND STANDARD DATA

|                                   | STANDARD                      | CUSTOMIZATION OPTIONS      |
|-----------------------------------|-------------------------------|----------------------------|
| Type                              | Electric linear actuator      |                            |
| Motor type                        | Brush PM DC motor             |                            |
| Cable                             | Flying wire 900 mm            | Length, type and connector |
| Voltage                           | 12 or 24 VDC                  | 36 or 48 VDC               |
| Screw type                        | ACME pitch 4.23 mm            |                            |
| Noise level                       | < 70 dB (A)                   | Yes                        |
| Life time                         | 4 million mm total stroke     |                            |
| Limit switches                    | Integrated non adjustable     | Stroke length              |
| Direction movement                | By reversing voltage polarity | Yes                        |
| Stroke tolerance                  | ±2 mm                         |                            |
| Duty cycle                        | 25%                           |                            |
| Max. duty operational time        | 1 min. nominal dynamic load   |                            |
| Protection class                  | IP65                          |                            |
| Insulation class                  | F                             |                            |
| Max. motor winding temp.          | 155 °C                        |                            |
| EMC                               | EN60601                       |                            |
| Gear box                          | Metal spur gears              |                            |
| Motor pinion gear                 | Metal SMF5030                 |                            |
| Gear box material                 | Aluminium die cast            |                            |
| Rod and house material            | Aluminum 6061                 |                            |
| Feedback options                  | Potentiometer or hall sensor  |                            |
| Operating and storage temperature | -25°C~+65°C                   |                            |
| Manufacturing quality standards   | ISO 9001:2008                 |                            |
| RoHS compliance                   | Yes                           |                            |
| CE label                          | Yes                           |                            |

## Motor wiring



|         | Red | Black |
|---------|-----|-------|
| Extend  | +   | -     |
| Retract | -   | +     |