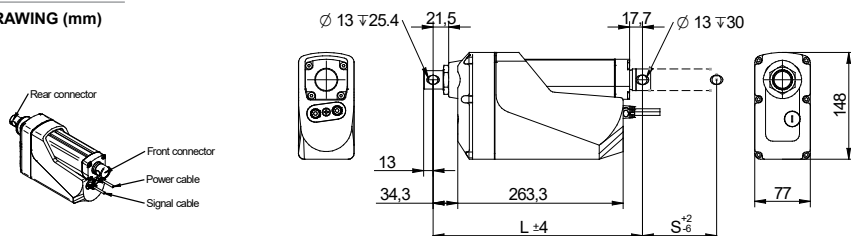


**DRAWING (mm)**



**PHOTO**



**MODEL NO. DESIGNATION**

DHI - VOLTAGE - GEAR RATIO - B - STROKE LENGTH - IP69K

Example: DHI-12-5-B-100-IP69K

**ACCESSORIES**

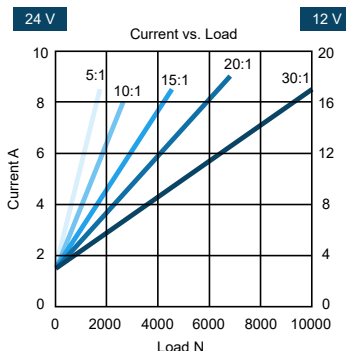
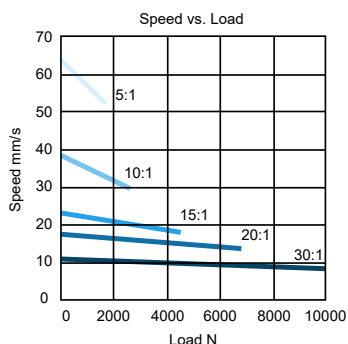


● C = customizations are offered on demand even for smaller quantities. Typical customizations are indicated with a green dot at column end. Please contact us for any customization request.

ACTUATOR DATA							C
Gear ratio		5:1	10:1	15:1	20:1	30:1	●
Voltage	V	12   24	12   24	12   24	12   24	12   24	
No load current	A	3.0   1.5	3.0   1.5	3.0   1.5	3.0   1.5	3.0   1.5	
Full load current	A	18   9	18   9	18   9	20   10	18   9	
Duty cycle	%	25	25	25	25	15	
Push/pull max.	N	1700	2600	4500	6800	10000	
Full load speed	mm/s	49	29	17	13	8	
No load speed	mm/s	66	40	24	18	11	

ACTUATOR STROKE DATA							C
Stroke length   S	mm	100	200	300	400	500	●
Retracted length   L	mm	290	390	490	590	690	
Life time no. of single strokes		160000	80000	53000	40000	32000	
Weight	kg	4.8	5.8	6.3	6.8	7.8	

**ACTUATOR PERFORMANCE GRAPHS 12 V | 24 V**

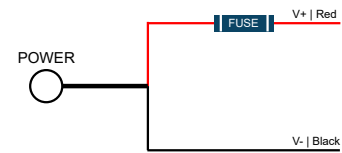


**WARNING!** It is forbidden to use Pulse Width Modulation (PWM) as input power to DHI as it will cause malfunction and cause permanent damage.

**NOTES**

- Brushed DC motor is the standard configuration. Brushless DC motor available as an option. Contact us for more information.
- Over current protection specifications 25 A at 12 V DC and 12.5 A at 24 V DC, actuator will be stopped automatically. Over current protection is only applicable in emergency situations. It should not be used for the normal routine stopping needs of the actuator, as this may cause permanent damage.
- Non-condensing.
- 40 A for 12 V and 20 A for 24 V.
- Contact us for stroke lengths above 500 mm.

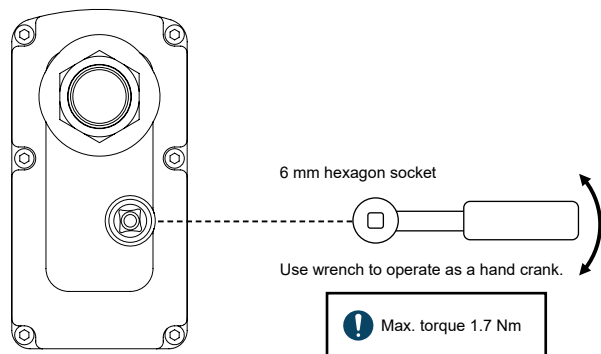
ACTUATOR WIRING DIAGRAM NO CONTROL OPTION C



ACTUATOR WIRING CONFIGURATION NO CONTROL OPTION

Wire	Symbol	Description
Red	V+	Connect red wire to "V+" and black wire to "V-" of DC power to extend the actuator. Switch the polarity of DC input to retract it.
Black	V-	Input voltage is according to actuator voltage specification.

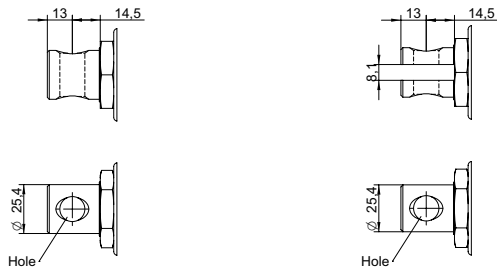
MANUAL OPERATION FUNCTION | HAND CRANK



HAND CRANK SPECIFICATION

		5:1	10:1	15:1	20:1	30:1
Gear ratio		5:1	10:1	15:1	20:1	30:1
Distance per crank revolution	mm	2.2	1.3	0.80	0.61	0.39

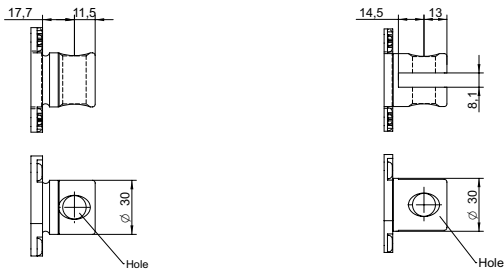
## ACTUATOR REAR CONNECTOR OPTIONS



### ACTUATOR REAR CONNECTOR OPTIONS DATA<sup>1</sup> C

Connector type	Metal solid   Metal slot	●
Hole diameter	mm	12.2   13 ●
Description	Contact us for more information.	

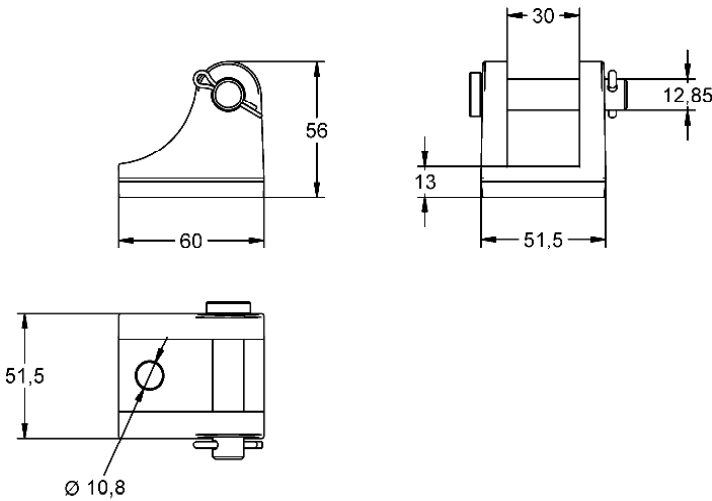
## ACTUATOR FRONT CONNECTOR OPTIONS



### ACTUATOR FRONT CONNECTOR OPTIONS DATA<sup>1</sup> C

Connector type	Metal solid   Metal slot	●
Hole diameter	mm	12.2   13 ●
Description	Contact us for more information.	

## MOUNTING BRACKET DRAWING ALA-13



### MOUNTING BRACKET SPECIFICATION ALA-13

Model name	ALA-13	
Max. load	N	17000
Material	SUS304 Stainless Steel	
Weight	kg	0.55

CONTROL OPTIONS	POT <sup>2</sup>	HS2 <sup>2</sup>	CCB <sup>2</sup>	NO <sup>3</sup>	CNO <sup>3</sup>	CPOT <sup>3</sup>	CHS2 <sup>2</sup>	C
H-bridge	-	-	●	-	●	●	●	
Potentiometer output	●	-	-	-	-	●	-	
Hall signal output	-	●	●	-	-	-	●	
EoS signal output	●	●	●	●	●	●	●	
Soft start/stop	-	-	●	-	●	●	●	
Voltage protection	-	-	●	-	●	●	●	
Temperature monitoring	-	-	●	-	●	●	●	
Action status feedback	-	-	●	-	-	-	-	
Current feedback	-	-	●	-	-	-	-	
Position feedback	-	-	●	-	-	-	-	
Speed/ramp feedback	-	-	●	-	-	-	-	
Error code feedback	-	-	●	-	-	-	-	

## NOTES

- Standard configuration is metal solid, hole diameter 13 mm.
- Standard configuration, see separate datasheet on [www.transmotec.se](http://www.transmotec.se).
- Custom control option, contact us for more information.