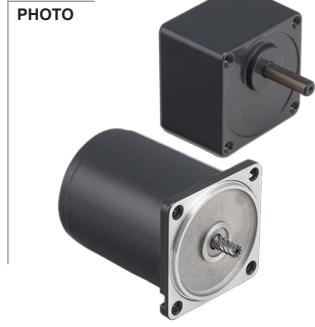
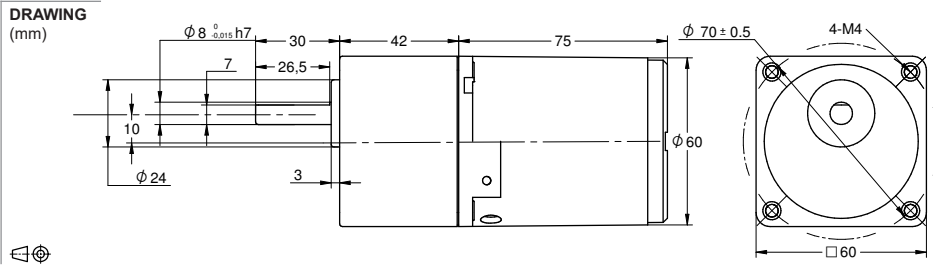


Motor model AI-006W ← SOLD SEPARATELY → Gear box model S60A



MODEL NO. DESIGNATION

Motor model - Voltage - S/T C/B S= Single phase / T=Three phase C=Cable / B=Terminal box Example: **AI-006W-230-SC (*)**

Gear box model - Gear ratio Example: **S60A-050 (*)**

*** ALL MOTORS AND GEAR BOXES ARE SOLD SEPARATELY. SELECT GEAR BOX FRAME SIZE SAME AS MOTOR FRAME SIZE. ASSEMBLY SCREWS ARE INCLUDED IN DELIVERY**

GEAR MOTOR DATA RATIO	3	3,6	5	6	7,5	9	1	12,5	15	18	20	25	30	36	40	50	60	75	90	100	120	150	180	200	250	300	500	600	750	
230VAC 50Hz 1 phase																														
Nominal rpm 220 VAC	400	333	240	200	160	133	120	96	80	67	60	48	40	33	30	24	20	16	13	12	10	8	7	6						
Nominal rpm 230 VAC	483	403	290	242	193	161	145	116	97	81	73	58	48	40	36	29	24	19	16	15	12	10	8	7						
Nominal Nm 220 VAC	0.1	0.1	0.2	0.2	0.3	0.3	0.4	0.5	0.6	0.7	0.7	0.9	1.1	1.3	1.4	1.8	1.9	2.4	2.9	3.2	3.8	4.8	5.7	6.3						
Nominal Nm 230 VAC	0.1	0.1	0.2	0.2	0.2	0.3	0.3	0.4	0.5	0.6	0.6	0.7	0.9	1.1	1.2	1.5	1.6	2.0	2.4	2.6	3.2	4.0	4.8	5.3						
400VAC 50Hz 3 phase																														
Nominal rpm 380 VAC	400	333	240	200	160	133	120	96	80	67	60	48	40	33	30	24	20	16	13	12	10	8	7	6						
Nominal Nm 380 VAC	0.1	0.1	0.2	0.2	0.3	0.3	0.4	0.5	0.6	0.7	0.7	0.9	1.1	1.3	1.4	1.8	1.9	2.4	2.9	3.2	3.8	4.8	5.7	6.3						
120VAC 60Hz 1 phase																														
Nominal rpm 110 VAC	483	403	290	242	193	161	145	116	97	81	73	58	48	40	36	29	24	19	16	15	12	10	8	7						
Nominal Nm 110 VAC	0.1	0.1	0.2	0.2	0.2	0.3	0.3	0.4	0.5	0.6	0.6	0.7	0.9	1.1	1.2	1.5	1.6	2.0	2.4	2.6	3.2	4.0	4.8	5.3						
208VAC 60Hz 3 phase																														
Nominal rpm 220 VAC	483	403	290	242	193	161	145	116	97	81	73	58	48	40	36	29	24	19	16	15	12	10	8	7						
Nominal Nm 220 VAC	0.1	0.1	0.2	0.2	0.2	0.3	0.3	0.4	0.5	0.6	0.6	0.7	0.9	1.1	1.2	1.5	1.6	2.0	2.4	2.6	3.2	4.0	4.8	5.3						
GEAR HEAD DATA																														
Efficiency (%)	81	81	81	81	81	81	81	81	81	81	73	73	73	73	73	73	66	66	66	66	66	66	66	66						
Max. torque (Nm)	3	3	3	3	3	3	3	3	3	3	3	3	3	3	3	3	3	3	3	3	3	3	3	3						
Radial F 20 mm shaft (N)	80	80	80	80	80	80	80	80	80	80	180	180	180	180	180	180	180	180	180	180	180	180	180	180						
Max. thrust load (N)	30	30	30	30	30	30	30	30	30	30	30	30	30	30	30	30	30	30	30	30	30	30	30	30						
Out rotation when in cw	cw	cw	cw	cw	cw	cw	cw	cw	cw	cw	ccw	ccw	ccw	ccw	ccw	ccw	cw	cw	cw	cw	cw	cw	cw	cw						

GEAR MOTOR FEATURES	STANDARD	CUSTOMIZATION
Motor type	AC induction	Voltage
Insulation Class	130 (B)	155 (F)
Speed tolerance	± 5%	
Cables 6W-25W 40W-120W	AWG20 AWG-18 300 mm	Harness
Cables wiring	Table at bottom of page	Per request
Housing materials	Aluminium	
Gears and shaft material	40Cr	Shaft dimensions
Bearings types	Ball bearings	
Operating temperature	-10...+40 °C	-40...+40 °C
Manufacturing quality standards	ISO 9001	
RoHS compliance	Yes	
CE UL label	No No	
IP rating cable terminal box	IP20 IP54	
Insulation Resistance		
100 M Ω or more when 500 VDC megger is applied between the windings and the case after rated operation under normal ambient temperature and humidity.		
Dielectric Strength		
Sufficient to withstand 1.5 kV at 50 Hz or 60 Hz applied between the windings and the case for 1 minute after rated operation under normal ambient temperature and humidity.		
Temperature Rise		
Temperature rise of windings are 176°F (80°C) or less measured by the resistance change method after rated operation under normal ambient temperature and humidity.		

MOTOR DATA				
Base voltage (VAC)	230	400	120	208
Nominal voltage (VAC) A	220	380	110	220
Nominal voltage (VAC) B	230		120	
Phase Frequency Hz	1 50	3 50	1 60	3 60
Number of poles	4	4	4	4
Output (W)	6	6	6	6
Nominal speed (rpm) voltage A	1200	1200	1450	1450
Nominal speed (rpm) voltage B	1450		1450	
Nominal torque mNm voltage A	48	48	40	40
Nominal torque mNm voltage B	40		40	
Nominal current (A) voltage A	0.13	0.04	0.16	0.07
Nominal current (A) voltage B	0.14		0.18	
Stall torque mNm voltage A	50	85	40	70
Stall torque mNm voltage B			40	
Capacitor μF included in delivery	0.8		2.0	
Weight motor Kg	0.75	0.75	0.75	0.75
Weight gear motor Kg	1.15	1.15	1.15	1.15

ELECTRIC WIRING CONNECTION	
VERSION C 1 PHASE	capacitor white-blue neutral N-red phase-white CW, -blue CWW
VERSION B 1 PHASE	capacitor U2-Z2 neutral N-U1 phase-U2 CW, -Z2 CWW
VERSION C B 3 PHASES	-blue, -red, -white. Swap a pair for inversed rotation