



OPEN FRAME SOLENOIDS | Push type

Transmotec sell a broad range of high quality solenoids in standard and customized configurations. Transmotec is the ideal supplier source especially to instrument and apparatus builders. We keep a high number of motors in stock for immediate delivery.

Customizations include:

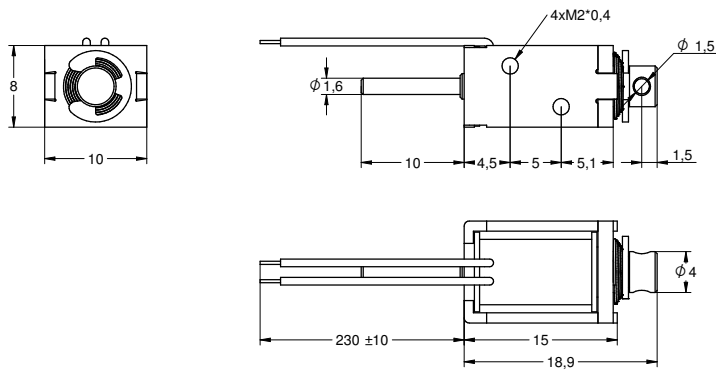
- ✓ Customized harness
- ✓ Winding configuration
- ✓ Plunger configuration
- ✓ And more...

TABLE OF CONTENTS

Model	Length	Width	Height	Page
F0415S	15mm	8mm	10mm	1
F0520S	20mm	13mm	16mm	2
F0530S	30mm	10mm	15mm	3
F0626S	26mm	16mm	20mm	4
F0630S	29.5mm	19mm	16mm	5
F0730S	30.2mm	16mm	14mm	6
F0826S	26mm	25mm	22mm	7
F0837S	37mm	26mm	20mm	8
F1037S	37mm	26mm	20mm	9
F1039S	39mm	20mm	26mm	10
F1040S	40mm	24mm	29mm	11
F1250S	50mm	37mm	41mm	12
F1253S	53.5mm	27mm	30mm	13
F1564S	64mm	38mm	30mm	14
F1578S	78mm	44mm	51mm	15
F1585S	85mm	35mm	40mm	16
F1683S	84mm	52mm	58mm	17

F0415S (push type)

DRAWING (mm)



PHOTO



MODEL NO. DESIGNATION

F0415S - VOLTAGE

Example: F0415S-12V

SOLENOID DATA

Duty cycle / ED (%) ▶	Continuous (100%)	Intermittent (50%)	Intermittent (25%)	Intermittent (10%)
Watts @ 20°C ▶	0.8	1.6	3.2	8
Maximum time in energized state (in seconds) ▶	∞	50	18	3

Part ▼	Resistance (20°C) ± 10% (Ω) ▼		DC Volts (V) ▼		
	11.2	3	4.2	6	9.5
F0415S-03V	11.2	3	4.2	6	9.5
F0415S-06V	45	6	8.5	12	19
F0415S-12V	180	12	17	24	38
F0415S-24V	720	24	34	48	76

SOLENOID FEATURES AND STANDARD DATA

	STANDARD	CUSTOMIZATION OPTIONS
Type	Push type DC solenoid	Push type DC solenoid
Cable	Flying wire 230mm	Length, type and connector
Voltage	3 to 24 VDC @ 100% ED	Other voltages upon request
Life time	At least 500.000 single strokes	
Plunger material	Carbon steel 12L14	
Protection class	IP00	
Insulation grade	B	
Operating temperature	-5°C ... +40°C	
Manufacturing quality standards	ISO9001:2008, ISO/TS 16949:2002	
RoHS compliance	Yes	
CE approval	No	
UL approval	No	

ADDITIONAL DATA

Return spring	Yes
Weight	5.4g

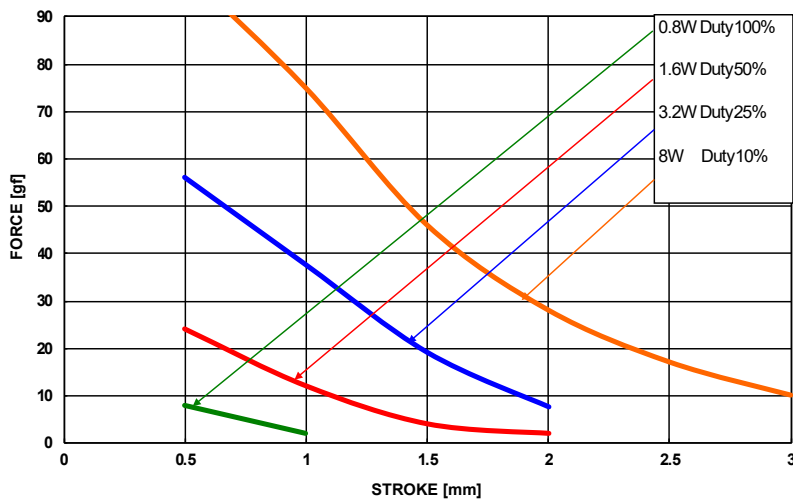
SPRING DATA

Loading force @ 2.1mm compression	3.5g
Loading force @ 0.5mm compression	8.6g

PLUNGER PROFILE

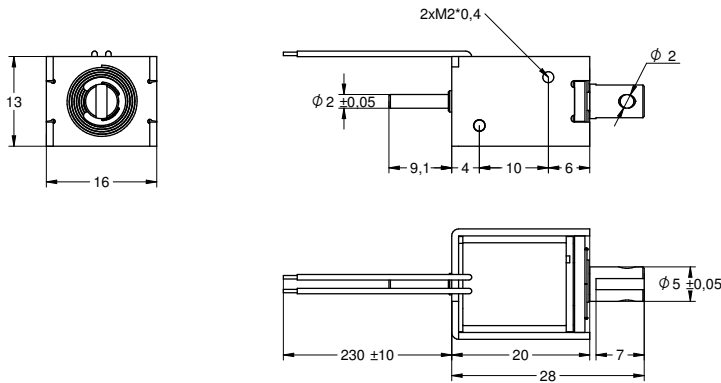


DIAGRAM



F0520S (push type)

DRAWING (mm)



PHOTO



MODEL NO. DESIGNATION

F0520S - VOLTAGE
Example: F0520S-12V

SOLENOID DATA

Duty cycle / ED (%) ▶	Continuous (100%)	Intermittent (50%)	Intermittent (25%)	Intermittent (10%)	
Watts @ 20°C ▶	1.6	3.2	6.4	16	
Maximum time in energized state (in seconds) ▶	∞	55	19	3	
Part ▼	Resistance (20°C) ± 10% (Ω) ▼	DC Volts (V) ▼			
F0520S-06V	23	6	8.5	12	19
F0520S-12V	90	12	17	24	38
F0520S-24V	360	24	34	48	76

SOLENOID FEATURES AND STANDARD DATA

	STANDARD	CUSTOMIZATION OPTIONS
Type	Push type DC solenoid	Push type DC solenoid
Cable	Flying wire 230mm	Length, type and connector
Voltage	6 to 24 VDC @ 100% ED	Other voltages upon request
Life time	At least 500.000 single strokes	
Plunger material	Carbon steel 12L14	
Protection class	IP00	
Insulation grade	B	
Operating temperature	-5°C ... +40°C	
Manufacturing quality standards	ISO9001:2008, ISO/TS 16949:2002	
RoHS compliance	Yes	
CE approval	No	
UL approval	No	

ADDITIONAL DATA

Return spring	Yes
Weight	18g

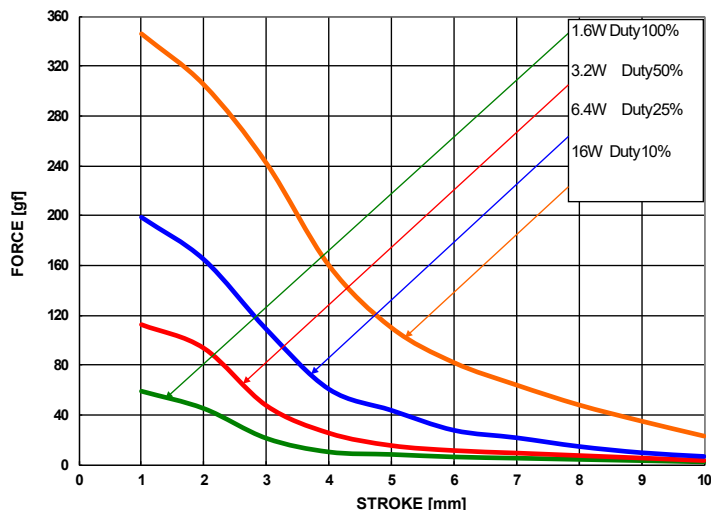
SPRING DATA

Loading force @ 3mm compression	18g
---------------------------------	-----

PLUNGER PROFILE

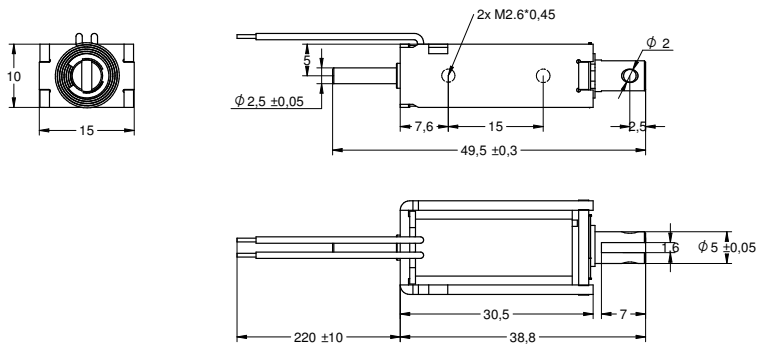


DIAGRAM



F0530S (push type)

DRAWING (mm)



PHOTO



MODEL NO. DESIGNATION

F0530S - VOLTAGE

Example: F0530S-12V

SOLENOID DATA

Duty cycle / ED (%) ▶	Continuous (100%)	Intermittent (50%)	Intermittent (25%)	Intermittent (10%)
Watts @ 20°C ▶	1.7	3.4	6.8	17
Maximum time in energized state (in seconds) ▶	∞	50	18	2
Part ▼	Resistance (20°C) ± 10% (Ω) ▼	DC Volts (V) ▼		
F0530S-06V	21.2	6	8.5	12
F0530S-12V	84.7	12	17	24
F0530S-24V	339	24	34	48

SOLENOID FEATURES AND STANDARD DATA

	STANDARD	CUSTOMIZATION OPTIONS
Type	Push type DC solenoid	Push type DC solenoid
Cable	Flying wire 230mm	Length, type and connector
Voltage	6 to 24 VDC @ 100% ED	Other voltages upon request
Life time	At least 500.000 single strokes	
Plunger material	Carbon steel 12L14	
Protection class	IP00	
Insulation grade	B	
Operating temperature	-5°C ... +40°C	
Manufacturing quality standards	ISO9001:2008, ISO/TS 16949:2002	
RoHS compliance	Yes	
CE approval	No	
UL approval	No	

ADDITIONAL DATA

Return spring	Yes
Weight	23g

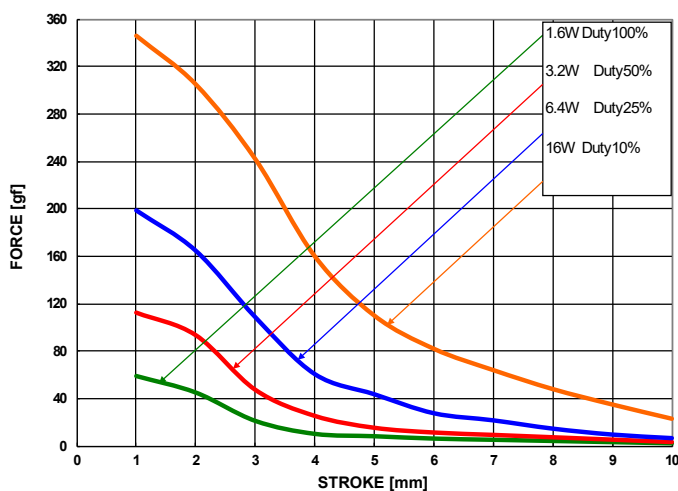
SPRING DATA

Loading force @ 3mm compression	18g
---------------------------------	-----

PLUNGER PROFILE

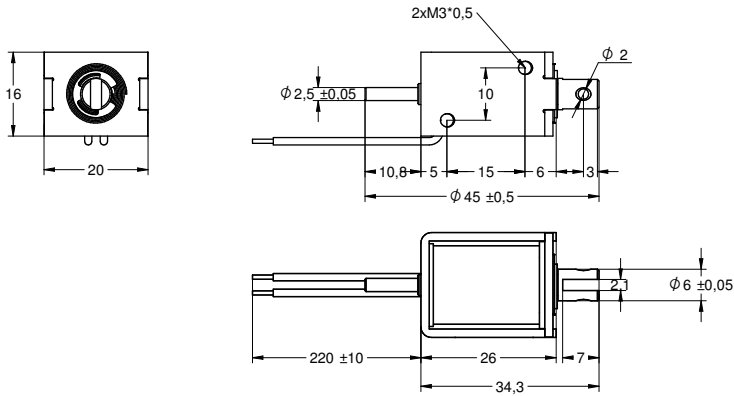


DIAGRAM



F0626S (push type)

DRAWING (mm)



PHOTO



MODEL NO. DESIGNATION

F0626S - VOLTAGE

Example: F0626S-12V

SOLENOID DATA

Duty cycle / ED (%) ▶	Continuous (100%)	Intermittent (50%)	Intermittent (25%)	Intermittent (10%)
Watts @ 20°C ▶	2.1	4.2	8.4	21
Maximum time in energized state (in seconds) ▶	∞	55	19	3

Part ▼	Resistance (20°C) ± 10% (Ω) ▼		DC Volts (V) ▼		
	17.1	6	8.5	12	19
F0626S-06V	17.1	6	8.5	12	19
F0626S-12V	69	12	17	24	38
F0626S-24V	339	24	34	48	76

SOLENOID FEATURES AND STANDARD DATA

	STANDARD	CUSTOMIZATION OPTIONS
Type	Push type DC solenoid	Push type DC solenoid
Cable	Flying wire 230mm	Length, type and connector
Voltage	6 to 24 VDC @ 100% ED	Other voltages upon request
Life time	At least 500.000 single strokes	
Plunger material	Carbon steel 12L14	
Protection class	IP00	
Insulation grade	B	
Operating temperature	-5°C ... +40°C	
Manufacturing quality standards	ISO9001:2008, ISO/TS 16949:2002	
RoHS compliance	Yes	
CE approval	No	
UL approval	No	

ADDITIONAL DATA

Return spring	Yes
Weight	43g

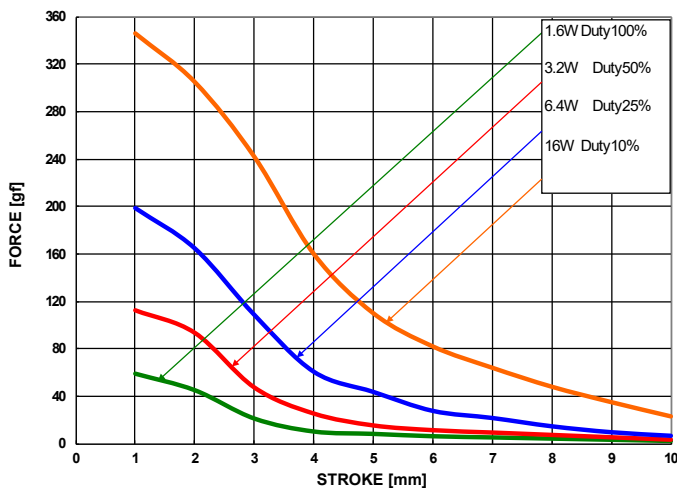
SPRING DATA

Loading force @ 1mm compression	30g
---------------------------------	-----

PLUNGER PROFILE

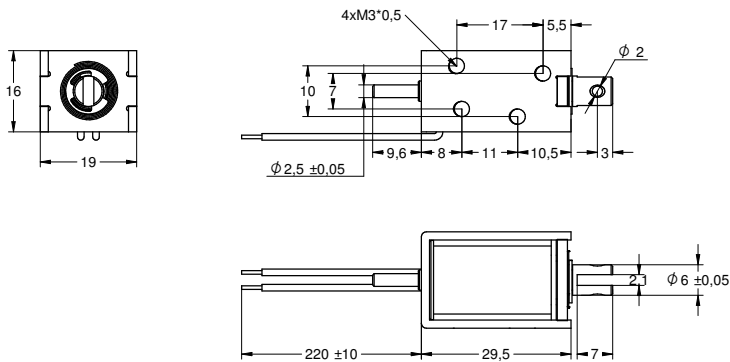


DIAGRAM



F0630S (push type)

DRAWING (mm)



PHOTO



MODEL NO. DESIGNATION

F0630S - VOLTAGE

Example: F0630S-12V

SOLENOID DATA

Duty cycle / ED (%) ▶	Continuous (100%)	Intermittent (50%)	Intermittent (25%)	Intermittent (10%)
Watts @ 20°C ▶	2.4	4.8	9.6	24
Maximum time in energized state (in seconds) ▶	∞	55	19	3

Part ▼	Resistance (20°C) ± 10% (Ω) ▼	DC Volts (V) ▼			
F0630S-06V	15	6	8.5	12	19
F0630S-12V	60	12	17	24	38
F0630S-24V	240	24	34	48	76

SOLENOID FEATURES AND STANDARD DATA

	STANDARD	CUSTOMIZATION OPTIONS
Type	Push type DC solenoid	Push type DC solenoid
Cable	Flying wire 230mm	Length, type and connector
Voltage	6 to 24 VDC @ 100% ED	Other voltages upon request
Life time	At least 500.000 single strokes	
Plunger material	Carbon steel 12L14	
Protection class	IP00	
Insulation grade	B	
Operating temperature	-5°C ... +40°C	
Manufacturing quality standards	ISO9001:2008, ISO/TS 16949:2002	
RoHS compliance	Yes	
CE approval	No	
UL approval	No	

ADDITIONAL DATA

Return spring	Yes
Weight	42g

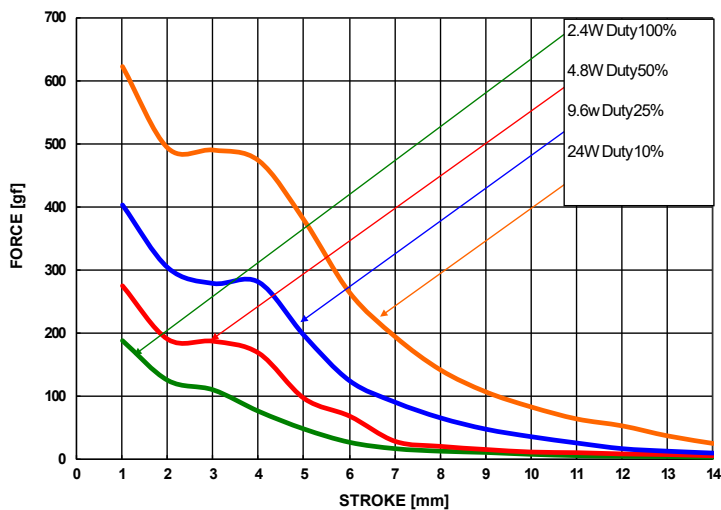
SPRING DATA

Loading force @ 1mm compression	30g
---------------------------------	-----

PLUNGER PROFILE

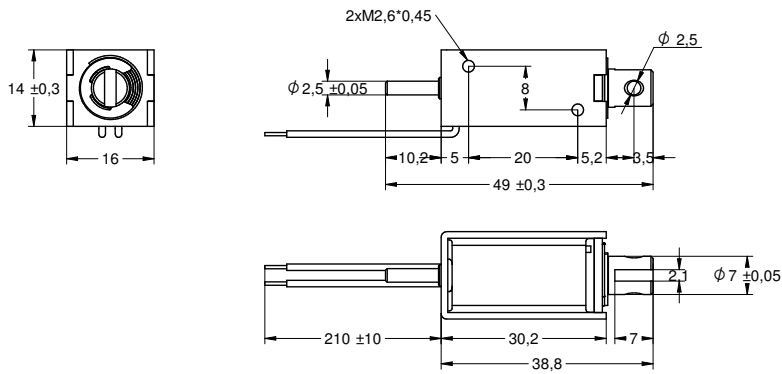


DIAGRAM



F0730S (push type)

DRAWING (mm)



PHOTO



MODEL NO. DESIGNATION

F0730S - VOLTAGE

Example: F0730S-12V

SOLENOID DATA

Duty cycle / ED (%) ▶	Continuous (100%)	Intermittent (50%)	Intermittent (25%)	Intermittent (10%)
Watts @ 20°C ▶	2.2	4.4	8.8	22
Maximum time in energized state (in seconds) ▶	∞	55	19	3

Part ▼	Resistance (20°C) ± 10% (Ω) ▼	DC Volts (V) ▼			
F0730S-06V	16.4	6	8.5	12	19
F0730S-12V	65.5	12	17	24	38
F0730S-24V	262	24	34	48	76

SOLENOID FEATURES AND STANDARD DATA

	STANDARD	CUSTOMIZATION OPTIONS
Type	Push type DC solenoid	Push type DC solenoid
Cable	Flying wire 230mm	Length, type and connector
Voltage	6 to 24 VDC @ 100% ED	Other voltages upon request
Life time	At least 500.000 single strokes	
Plunger material	Carbon steel 12L14	
Protection class	IP00	
Insulation grade	B	
Operating temperature	-5°C ... +40°C	
Manufacturing quality standards	ISO9001:2008, ISO/TS 16949:2002	
RoHS compliance	Yes	
CE approval	No	
UL approval	No	

ADDITIONAL DATA

Return spring	Yes
Weight	33g

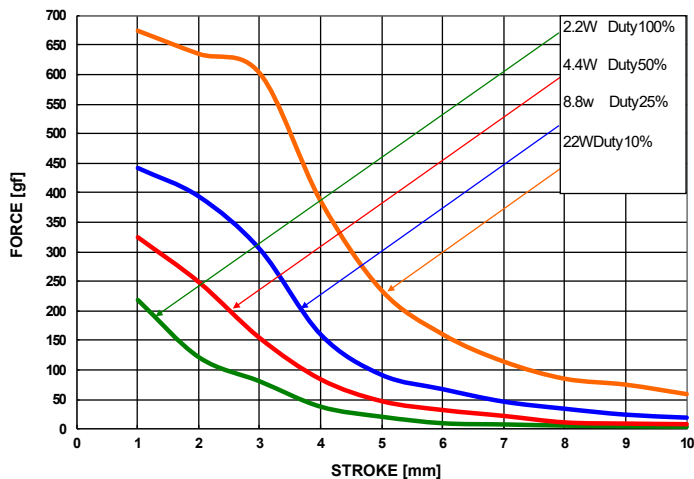
SPRING DATA

Loading force @ 1mm compression	93 ± 5g
---------------------------------	---------

PLUNGER PROFILE

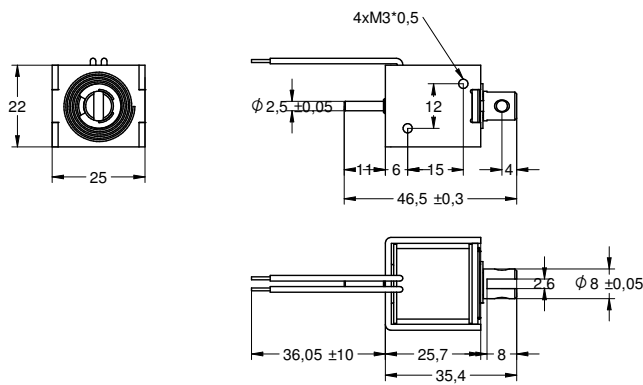


DIAGRAM



F0826S (push type)

DRAWING (mm)



PHOTO



MODEL NO. DESIGNATION

F0826S - VOLTAGE

Example: F0826S-12V

SOLENOID DATA

Duty cycle / ED (%) ▶	Continuous (100%)	Intermittent (50%)	Intermittent (25%)	Intermittent (10%)
Watts @ 20°C ▶	2.8	5.6	11.2	28
Maximum time in energized state (in seconds) ▶	∞	100	36	7

Part ▼	Resistance (20°C) ± 10% (Ω) ▼	DC Volts (V) ▼			
F0826S-06V	12.9	6	8.5	12	19
F0826S-12V	51.4	12	17	24	38
F0826S-24V	206	24	34	48	76

SOLENOID FEATURES AND STANDARD DATA

	STANDARD	CUSTOMIZATION OPTIONS
Type	Push type DC solenoid	Push type DC solenoid
Cable	Flying wire 230mm	Length, type and connector
Voltage	6 to 24 VDC @ 100% ED	Other voltages upon request
Life time	At least 500.000 single strokes	
Plunger material	Carbon steel 12L14	
Protection class	IP00	
Insulation grade	B	
Operating temperature	-5°C ... +40°C	
Manufacturing quality standards	ISO9001:2008, ISO/TS 16949:2002	
RoHS compliance	Yes	
CE approval	No	
UL approval	No	

ADDITIONAL DATA

Return spring	Yes
Weight	66g

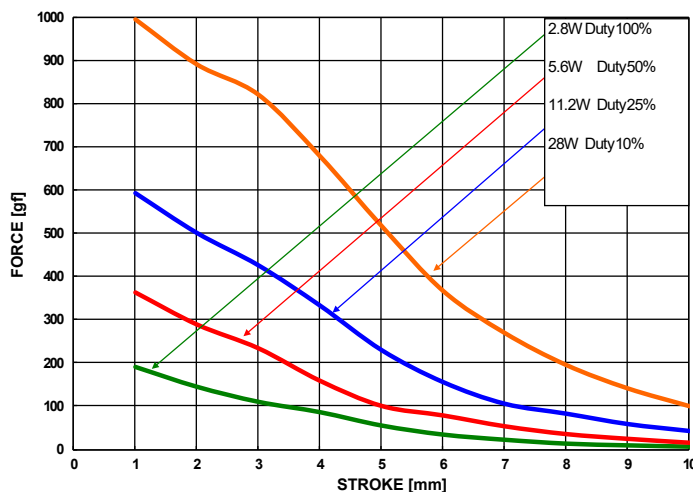
SPRING DATA

Loading force @ 3mm compression	78 ± 5g
---------------------------------	---------

PLUNGER PROFILE

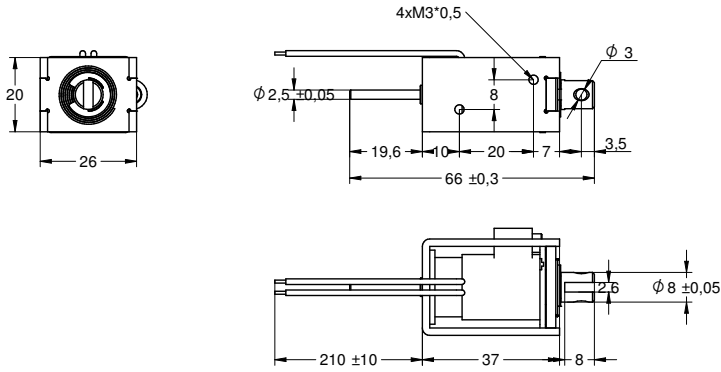


DIAGRAM



F0837S (push type)

DRAWING (mm)



PHOTO



MODEL NO. DESIGNATION

F0837S - VOLTAGE

Example: F0837S-12V

SOLENOID DATA

Duty cycle / ED (%) ▶	Continuous (100%)	Intermittent (50%)	Intermittent (25%)	Intermittent (10%)
Watts @ 20°C ▶	4	8	16	40
Maximum time in energized state (in seconds) ▶	∞	100	36	7

Part ▼	Resistance (20°C) ± 10% (Ω) ▼	DC Volts (V) ▼			
F0837S-06V	9	6	8.5	12	19
F0837S-12V	36	12	17	24	38
F0837S-24V	144	24	34	48	76

SOLENOID FEATURES AND STANDARD DATA

	STANDARD	CUSTOMIZATION OPTIONS
Type	Push type DC solenoid	Push type DC solenoid
Cable	Flying wire 230mm	Length, type and connector
Voltage	6 to 24 VDC @ 100% ED	Other voltages upon request
Life time	At least 500.000 single strokes	
Plunger material	Carbon steel 12L14	
Protection class	IP00	
Insulation grade	B	
Operating temperature	-5°C ... +40°C	
Manufacturing quality standards	ISO9001:2008, ISO/TS 16949:2002	
RoHS compliance	Yes	
CE approval	No	
UL approval	No	

ADDITIONAL DATA

Return spring	Yes
Weight	96g

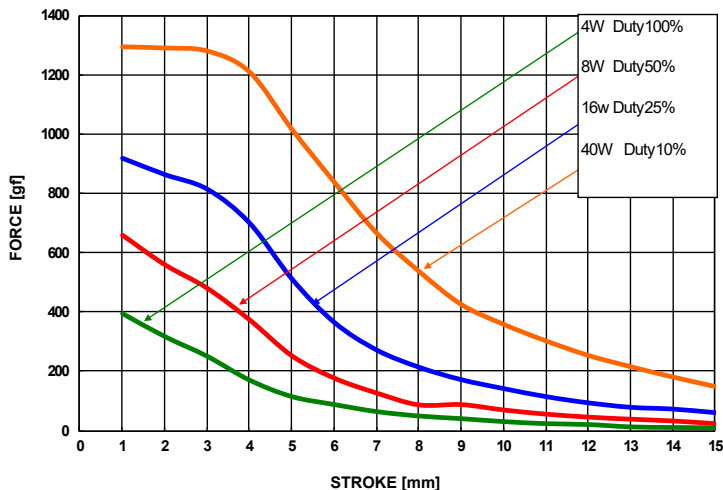
SPRING DATA

Loading force @ 5mm compression	48 ± 5g
---------------------------------	---------

PLUNGER PROFILE

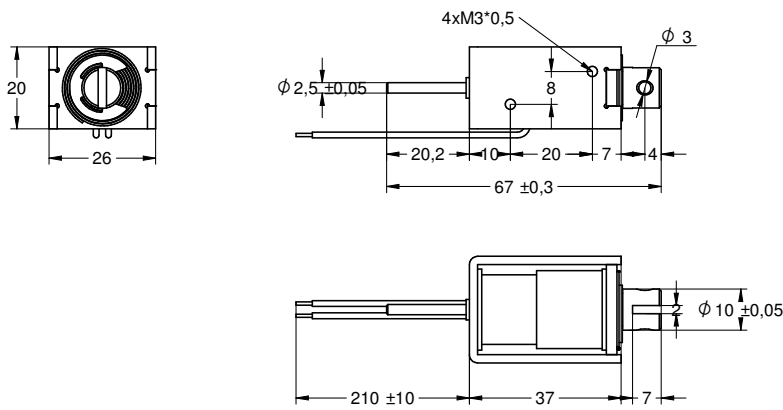


DIAGRAM



F1037S (push type)

DRAWING (mm)



PHOTO



MODEL NO. DESIGNATION

F1037S - VOLTAGE
Example: F1037S-12V

SOLENOID DATA					
Duty cycle / ED (%) ▶	Continuous (100%)	Intermittent (50%)	Intermittent (25%)	Intermittent (10%)	
Watts @ 20°C ▶	4	8	16	40	
Maximum time in energized state (in seconds) ▶	∞	100	36	7	
Part ▼	Resistance (20°C) ± 10% (Ω) ▼	DC Volts (V) ▼			
F1037S-06V	9	6	8.5	12	19
F1037S-12V	36	12	17	24	38
F1037S-24V	144	24	34	48	76

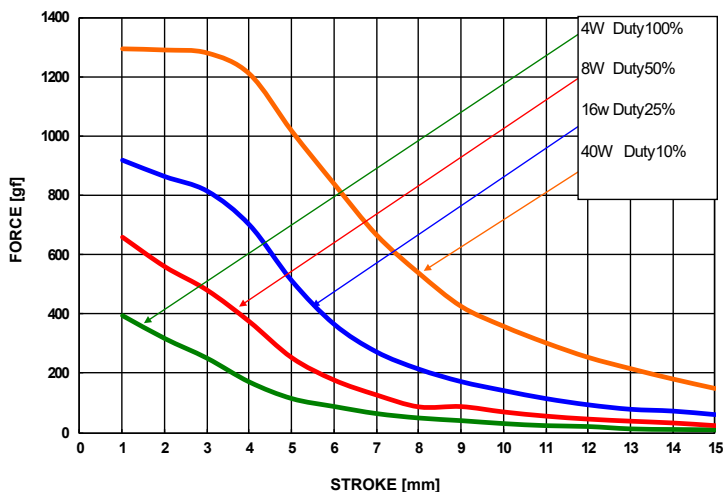
SOLENOID FEATURES AND STANDARD DATA		
	STANDARD	CUSTOMIZATION OPTIONS
Type	Push type DC solenoid	Push type DC solenoid
Cable	Flying wire 230mm	Length, type and connector
Voltage	6 to 24 VDC @ 100% ED	Other voltages upon request
Life time	At least 500.000 single strokes	
Plunger material	Carbon steel 12L14	
Protection class	IP00	
Insulation grade	B	
Operating temperature	-5°C ... +40°C	
Manufacturing quality standards	ISO9001:2008, ISO/TS 16949:2002	
RoHS compliance	Yes	
CE approval	No	
UL approval	No	

ADDITIONAL DATA	
Return spring	Yes
Weight	96g

PLUNGER PROFILE

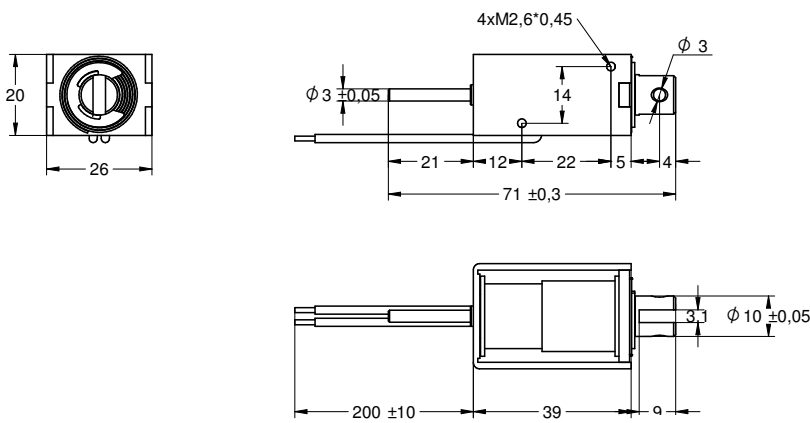


DIAGRAM



F1039S (push type)

DRAWING (mm)



PHOTO



MODEL NO. DESIGNATION

F1039S - VOLTAGE
Example: F1039S-12V

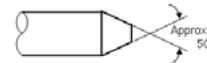
SOLENOID DATA				
Duty cycle / ED (%) ▶	Continuous (100%)	Intermittent (50%)	Intermittent (25%)	Intermittent (10%)
Watts @ 20°C ▶	3.8	7.6	15.2	38
Maximum time in energized state (in seconds) ▶	∞	140	50	9
Part ▼	Resistance (20°C) ± 10% (Ω) ▼	DC Volts (V) ▼		
F1039S-06V	9.5	6	8.5	12
F1039S-12V	38	12	17	24
F1039S-24V	152	24	34	48

SOLENOID FEATURES AND STANDARD DATA		
	STANDARD	CUSTOMIZATION OPTIONS
Type	Push type DC solenoid	Push type DC solenoid
Cable	Flying wire 230mm	Length, type and connector
Voltage	6 to 24 VDC @ 100% ED	Other voltages upon request
Life time	At least 500.000 single strokes	
Plunger material	Carbon steel 12L14	
Protection class	IP00	
Insulation grade	B	
Operating temperature	-5°C ... +40°C	
Manufacturing quality standards	ISO9001:2008, ISO/TS 16949:2002	
RoHS compliance	Yes	
CE approval	No	
UL approval	No	

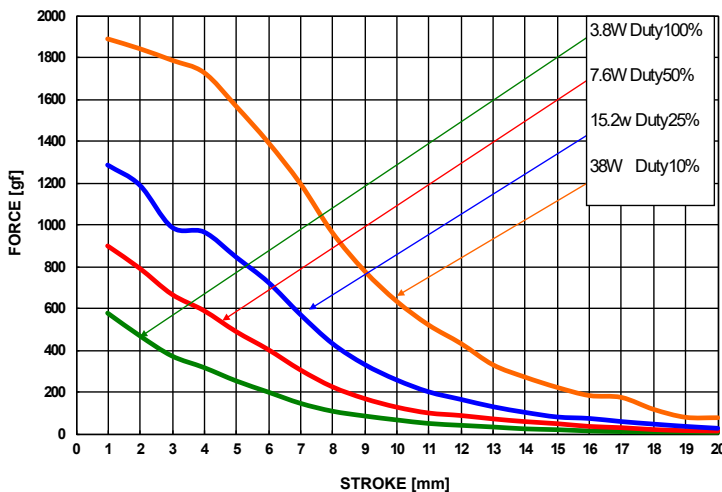
ADDITIONAL DATA	
Return spring	Yes
Weight	110g

SPRING DATA	
Loading force @ 5mm compression	60 ± 5g

PLUNGER PROFILE

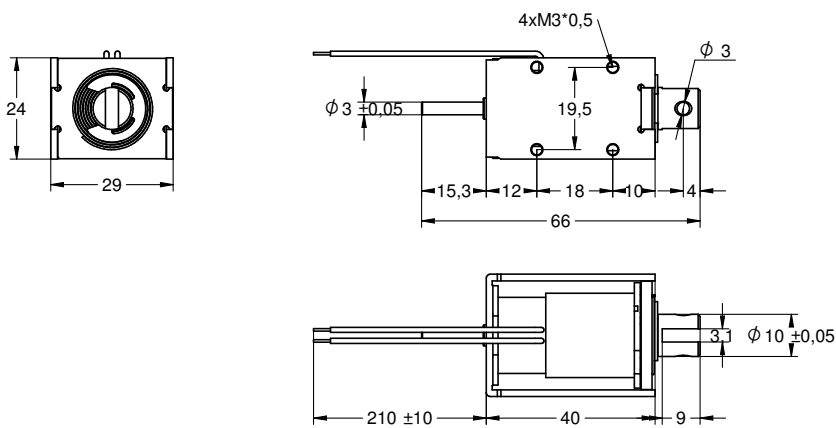


DIAGRAM



F1040S (push type)

DRAWING (mm)



PHOTO



MODEL NO. DESIGNATION

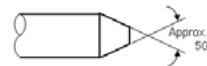
F1040S - VOLTAGE
Example: F1040S-12V

SOLENOID DATA					
Duty cycle / ED (%) ▶	Continuous (100%)	Intermittent (50%)	Intermittent (25%)	Intermittent (10%)	
Watts @ 20°C ▶	4.2	8.4	16.8	42	
Maximum time in energized state (in seconds) ▶	∞	100	36	7	
Part ▼	Resistance (20°C) ± 10% (Ω) ▼	DC Volts (V) ▼			
F1040S-06V	9	6	8.5	12	19
F1040S-12V	34	12	17	24	38
F1040S-24V	137	24	34	48	76

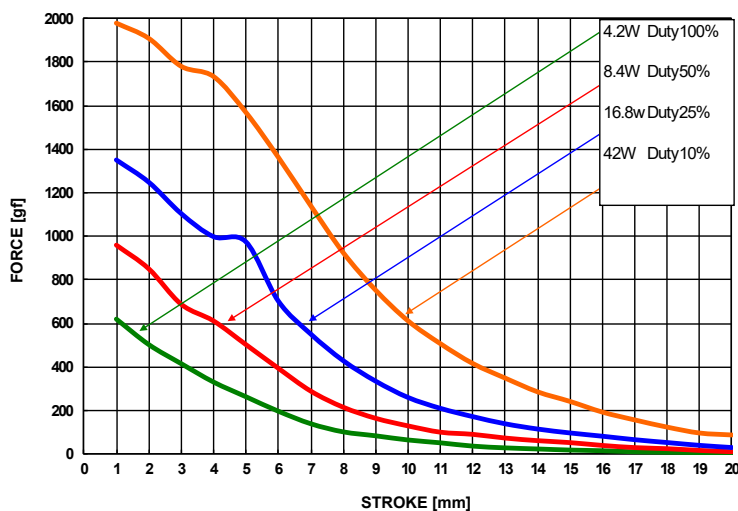
SOLENOID FEATURES AND STANDARD DATA			ADDITIONAL DATA	
	STANDARD	CUSTOMIZATION OPTIONS		
Type	Push type DC solenoid	Push type DC solenoid	Return spring	Yes
Cable	Flying wire 230mm	Length, type and connector	Weight	122g
Voltage	6 to 24 VDC @ 100% ED	Other voltages upon request		
Life time	At least 500.000 single strokes			
Plunger material	Carbon steel 12L14			
Protection class	IP00			
Insulation grade	B			
Operating temperature	-5°C ... +40°C			
Manufacturing quality standards	ISO9001:2008, ISO/TS 16949:2002			
RoHS compliance	Yes			
CE approval	No			
UL approval	No			

SPRING DATA	
Loading force @ 5mm compression	60 ± 5g

PLUNGER PROFILE

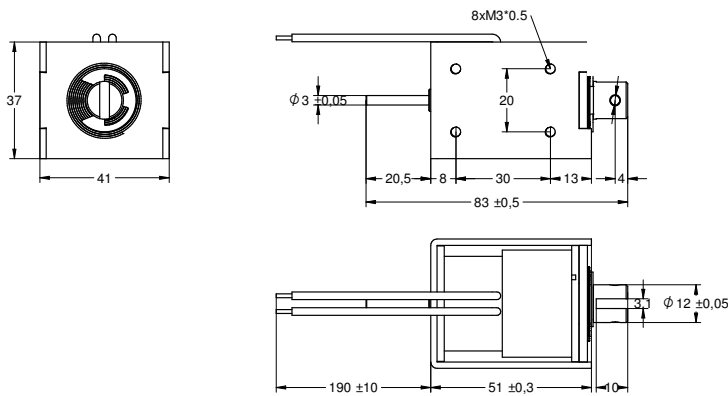


DIAGRAM



F1250S (push type)

DRAWING (mm)



PHOTO



MODEL NO. DESIGNATION

F1250S - VOLTAGE
Example: F1250S-12V

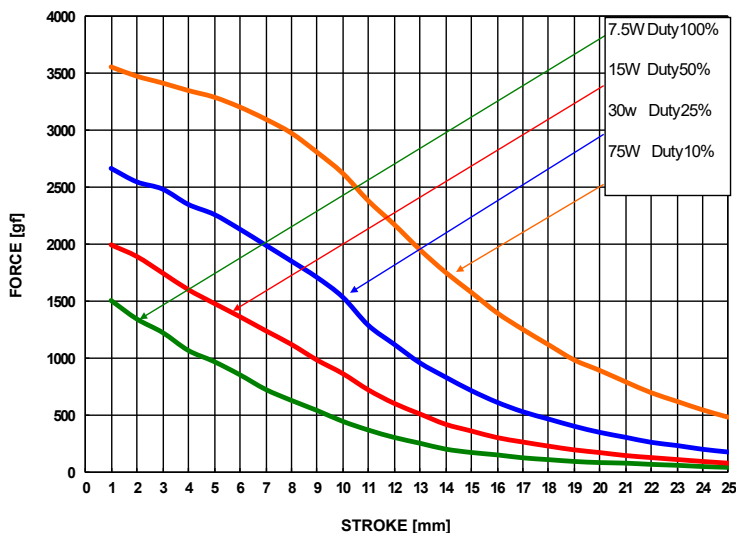
SOLENOID DATA					
Duty cycle / ED (%) ▶		Continuous (100%)	Intermittent (50%)	Intermittent (25%)	Intermittent (10%)
Watts @ 20°C ▶		7.5	15	30	75
Maximum time in energized state (in seconds) ▶		∞	140	50	9
Part ▼	Resistance (20°C) ± 10% (Ω) ▼	DC Volts (V) ▼			
F1250S-06V	4.8	6	8.5	12	19
F1250S-12V	19.2	12	17	24	38
F1250S-24V	76.8	24	34	48	76

SOLENOID FEATURES AND STANDARD DATA			ADDITIONAL DATA	
	STANDARD	CUSTOMIZATION OPTIONS		
Type	Push type DC solenoid	Push type DC solenoid	Return spring	Yes
Cable	Flying wire 230mm	Length, type and connector	Weight	315g
Voltage	6 to 24 VDC @ 100% ED	Other voltages upon request		
Life time	At least 500.000 single strokes			
Plunger material	Carbon steel 12L14			
Protection class	IP00			
Insulation grade	B			
Operating temperature	-5°C ... +40°C			
Manufacturing quality standards	ISO9001:2008, ISO/TS 16949:2002			
RoHS compliance	Yes			
CE approval	No			
UL approval	No			

SPRING DATA	
Loading force @ 20mm compression	85 ± 10g

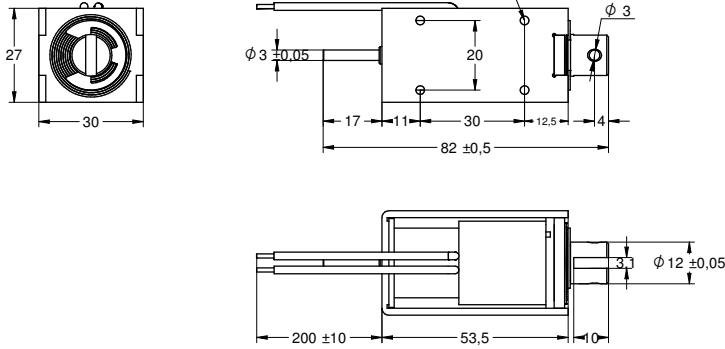


DIAGRAM



F1253S (push type)

DRAWING (mm)



PHOTO



MODEL NO. DESIGNATION

F1253S - VOLTAGE

Example: F1253S-12V

SOLENOID DATA

Duty cycle / ED (%) ▶	Continuous (100%)	Intermittent (50%)	Intermittent (25%)	Intermittent (10%)
Watts @ 20°C ▶	6	12	24	60
Maximum time in energized state (in seconds) ▶	∞	140	50	9

Part ▼	Resistance (20°C) ± 10% (Ω) ▼	DC Volts (V) ▼			
F1253S-06V	6	6	8.5	12	19
F1253S-12V	24	12	17	24	38
F1253S-24V	96	24	34	48	76

SOLENOID FEATURES AND STANDARD DATA

	STANDARD	CUSTOMIZATION OPTIONS
Type	Push type DC solenoid	Push type DC solenoid
Cable	Flying wire 230mm	Length, type and connector
Voltage	6 to 24 VDC @ 100% ED	Other voltages upon request
Life time	At least 500.000 single strokes	
Plunger material	Carbon steel 12L14	
Protection class	IP00	
Insulation grade	B	
Operating temperature	-5°C ... +40°C	
Manufacturing quality standards	ISO9001:2008, ISO/TS 16949:2002	
RoHS compliance	Yes	
CE approval	No	
UL approval	No	

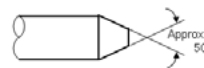
ADDITIONAL DATA

Return spring	Yes
Weight	205g

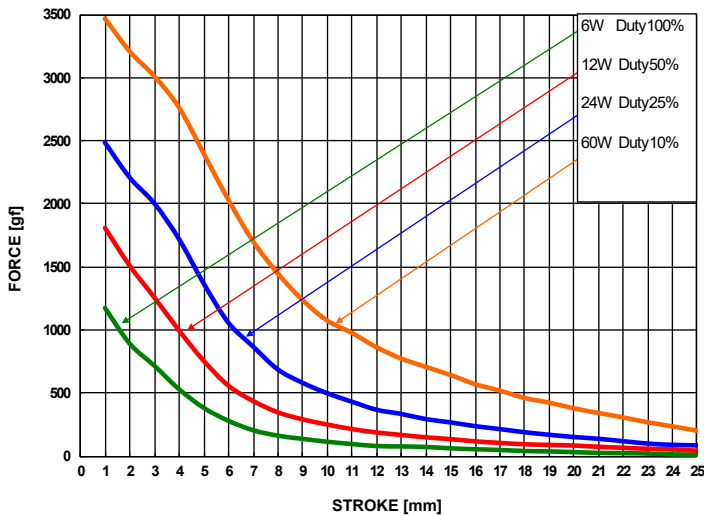
SPRING DATA

Loading force @ 20mm compression	85 ± 10g
----------------------------------	----------

PLUNGER PROFILE

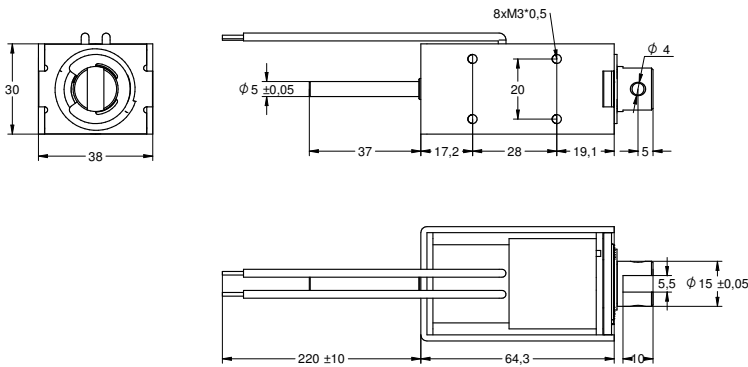


DIAGRAM



F1564S (push type)

DRAWING (mm)



PHOTO



MODEL NO. DESIGNATION

F1564S - VOLTAGE

Example: F1564S-12V

SOLENOID DATA

Duty cycle / ED (%) ▶	Continuous (100%)	Intermittent (50%)	Intermittent (25%)	Intermittent (10%)
Watts @ 20°C ▶	8	16	32	80
Maximum time in energized state (in seconds) ▶	∞	140	50	9

Part ▼	Resistance (20°C) ± 10% (Ω) ▼	DC Volts (V) ▼			
F1564S-06V	4.5	6	8.5	12	19
F1564S-12V	18	12	17	24	38
F1564S-24V	72	24	34	48	76

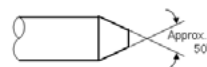
SOLENOID FEATURES AND STANDARD DATA

	STANDARD	CUSTOMIZATION OPTIONS
Type	Push type DC solenoid	Push type DC solenoid
Cable	Flying wire 230mm	Length, type and connector
Voltage	6 to 24 VDC @ 100% ED	Other voltages upon request
Life time	At least 500.000 single strokes	
Plunger material	Carbon steel 12L14	
Protection class	IP00	
Insulation grade	B	
Operating temperature	-5°C ... +40°C	
Manufacturing quality standards	ISO9001:2008, ISO/TS 16949:2002	
RoHS compliance	Yes	
CE approval	No	
UL approval	No	

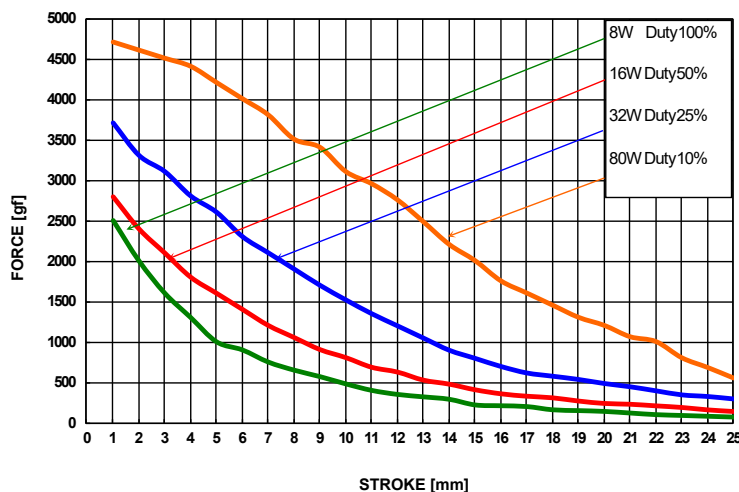
ADDITIONAL DATA

Return spring	Yes
Weight	363g

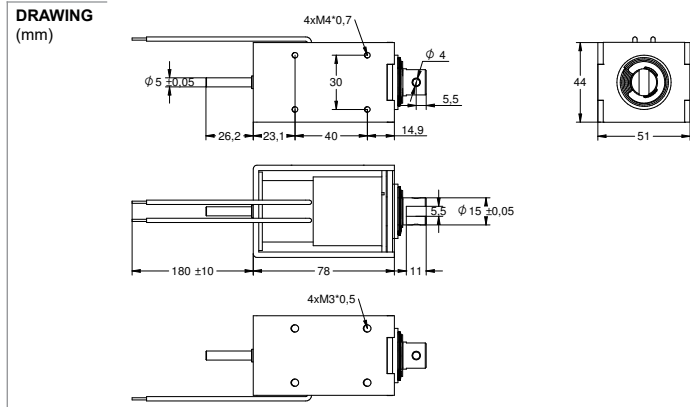
PLUNGER PROFILE



DIAGRAM



F1578S (push type)



PHOTO



MODEL NO. DESIGNATION

F1578S - VOLTAGE
 Example: F1578S-12V

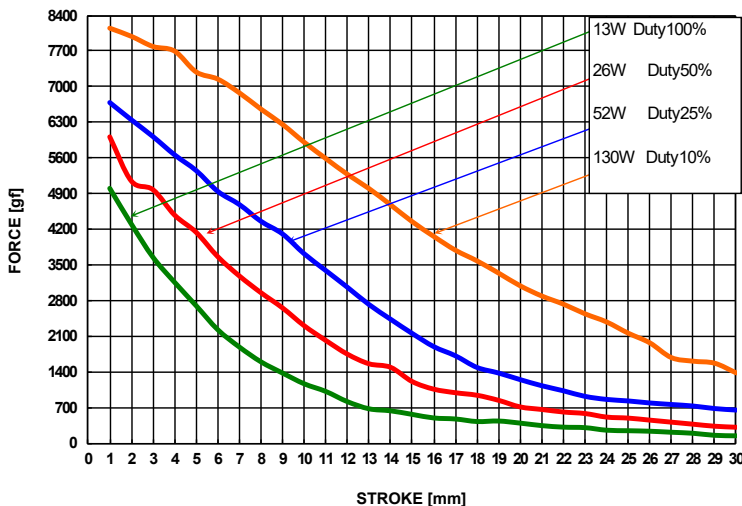
SOLENOID DATA					
Duty cycle / ED (%) ▶	Continuous (100%)	Intermittent (50%)	Intermittent (25%)	Intermittent (10%)	
Watts @ 20°C ▶	8	16	32	80	
Maximum time in energized state (in seconds) ▶	∞	160	80	32	
Part ▼	Resistance (20°C) ± 10% (Ω) ▼	DC Volts (V) ▼			
F1578S-06V	4.5	6	8.5	12	19
F1578S-12V	18	12	17	24	38
F1578S-24V	72	24	34	48	76

SOLENOID FEATURES AND STANDARD DATA		
	STANDARD	CUSTOMIZATION OPTIONS
Type	Push type DC solenoid	Push type DC solenoid
Cable	Flying wire 230mm	Length, type and connector
Voltage	6 to 24 VDC @ 100% ED	Other voltages upon request
Life time	At least 500.000 single strokes	
Plunger material	Carbon steel 12L14	
Protection class	IP00	
Insulation grade	B	
Operating temperature	-5°C ... +40°C	
Manufacturing quality standards	ISO9001:2008, ISO/TS 16949:2002	
RoHS compliance	Yes	
CE approval	No	
UL approval	No	

ADDITIONAL DATA	
Return spring	Yes
Weight	800g

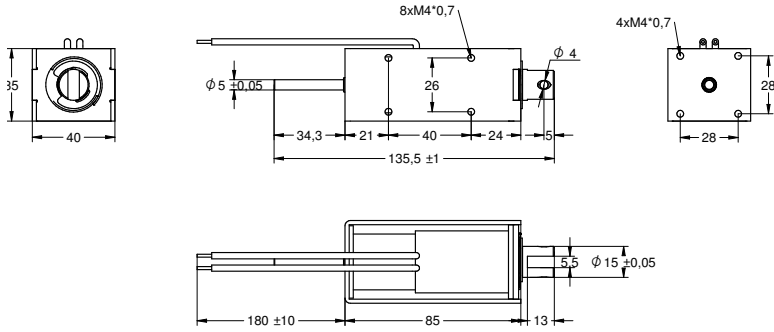


DIAGRAM



F1585S (push type)

DRAWING (mm)



PHOTO



MODEL NO. DESIGNATION

F1585S - VOLTAGE

Example: F1585S-12V

SOLENOID DATA

Duty cycle / ED (%) ▶	Continuous (100%)	Intermittent (50%)	Intermittent (25%)	Intermittent (10%)
Watts @ 20°C ▶	12.7	25.4	50.8	127
Maximum time in energized state (in seconds) ▶	∞	160	80	32

Part ▼	Resistance (20°C) ± 10% (Ω) ▼	DC Volts (V) ▼			
F1585S-06V	2.8	6	8.5	12	19
F1585S-12V	11.3	12	17	24	38
F1585S-24V	45.3	24	34	48	76

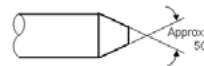
SOLENOID FEATURES AND STANDARD DATA

	STANDARD	CUSTOMIZATION OPTIONS
Type	Push type DC solenoid	Push type DC solenoid
Cable	Flying wire 230mm	Length, type and connector
Voltage	6 to 24 VDC @ 100% ED	Other voltages upon request
Life time	At least 500.000 single strokes	
Plunger material	Carbon steel 12L14	
Protection class	IP00	
Insulation grade	B	
Operating temperature	-5°C ... +40°C	
Manufacturing quality standards	ISO9001:2008, ISO/TS 16949:2002	
RoHS compliance	Yes	
CE approval	No	
UL approval	No	

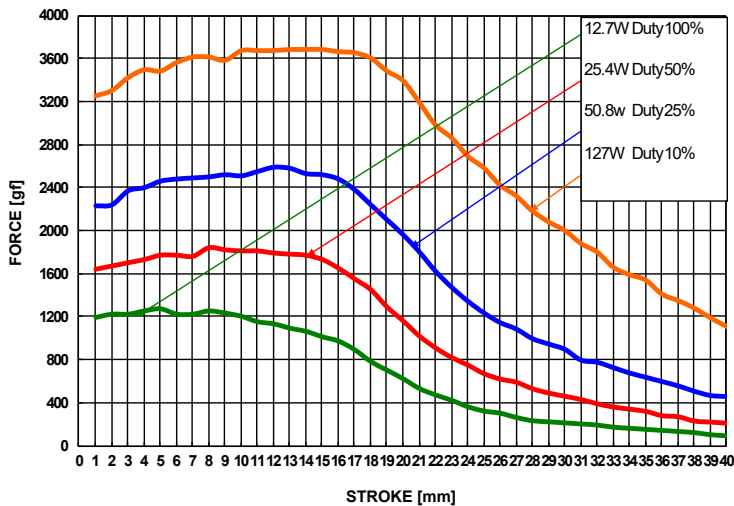
ADDITIONAL DATA

Return spring	Yes
Weight	530g

PLUNGER PROFILE

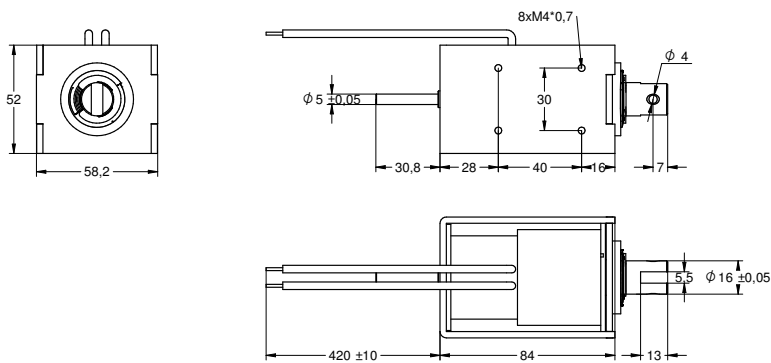


DIAGRAM



F1683S (push type)

DRAWING (mm)



PHOTO



MODEL NO. DESIGNATION

F1683S - VOLTAGE

Example: F1683S-12V

SOLENOID DATA

Duty cycle / ED (%) ▶	Continuous (100%)	Intermittent (50%)	Intermittent (25%)	Intermittent (10%)
Watts @ 20°C ▶	16	32	64	160
Maximum time in energized state (in seconds) ▶	∞	250	120	40

Part ▼	Resistance (20°C) ± 10% (Ω) ▼	DC Volts (V) ▼			
F1683S-06V	2.3	6	8.5	12	19
F1683S-12V	9	12	17	24	38
F1683S-24V	36	24	34	48	76

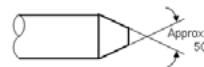
SOLENOID FEATURES AND STANDARD DATA

	STANDARD	CUSTOMIZATION OPTIONS
Type	Push type DC solenoid	Push type DC solenoid
Cable	Flying wire 230mm	Length, type and connector
Voltage	6 to 24 VDC @ 100% ED	Other voltages upon request
Life time	At least 500.000 single strokes	
Plunger material	Carbon steel 12L14	
Protection class	IP00	
Insulation grade	B	
Operating temperature	-5°C ... +40°C	
Manufacturing quality standards	ISO9001:2008, ISO/TS 16949:2002	
RoHS compliance	Yes	
CE approval	No	
UL approval	No	

ADDITIONAL DATA

Return spring	Yes
Weight	1090g

PLUNGER PROFILE



DIAGRAM

