



## **BRUSHED DC MOTOR DRIVERS | 10 - 35 V** **DPWM SERIES | 5 - 80 W**

We offer a broad range of high quality Brushed DC Motor Drivers in standard and customized configurations. Our customer-centric approach makes us the ideal supplier for your project, especially to instrument and apparatus builders. In addition, we offer immediate delivery, thanks to always having a high number of motors in stock.

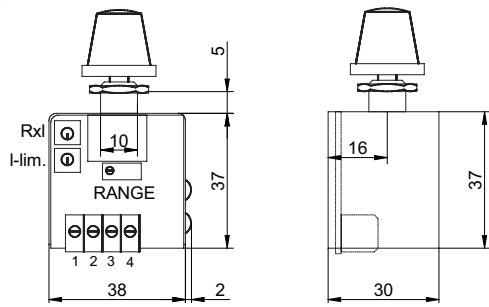
### **Customizations include:**

- ✓ Customized harness
- ✓ Winding configuration
- ✓ Shaft configuration
- ✓ And more...

# TABLE OF CONTENTS

MODEL	SUPPLY VOLTAGE V	POWER RANGE W	NOMINAL CURRENT A	OPERATING TEMPERATURE °C	PAGE
DPWM-80	10 to 35	5 to 80	3.0	0 to 60	<a href="#">1</a>
DPWM-200	10 to 35	5 to 80	20	-20 to 60	<a href="#">2</a>

## DRAWING (mm)



## PHOTO



## MODEL NO. DESIGNATION

DPWM - Max. power

Example: DPWM-80

## ACCESSORIES



C = customizations are offered on demand even for smaller quantities. Typical customizations are indicated with a green dot at column end. Please contact us for any customization request.

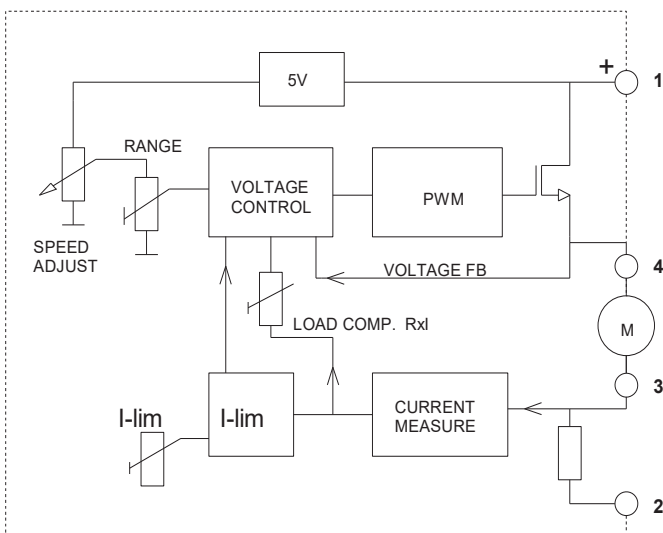
DC MOTOR SPEED CONTROLLER DATA			C
Supply voltage	V	10 to 35	
No load current	mA	20	
Nominal current <sup>1</sup>	A	3.0	
Peak current <sup>2</sup>	A	6	
Short circuit protection <sup>3</sup>		External fuse	
Current limit adjustment	A	0.5 to 6	
PWM frequency	kHz	25	
Max. motor cable cross-sectional area	mm <sup>2</sup>	1.5	
Operating temperature	°C	0 to 60	
Weight	g	75	

DC MOTOR SPEED CONTROLLER FEATURES			C
Power range	W	5 to 80	
Compatible motor		Brushed DC motor	
EMC		EN50081-2   EN50082-2	

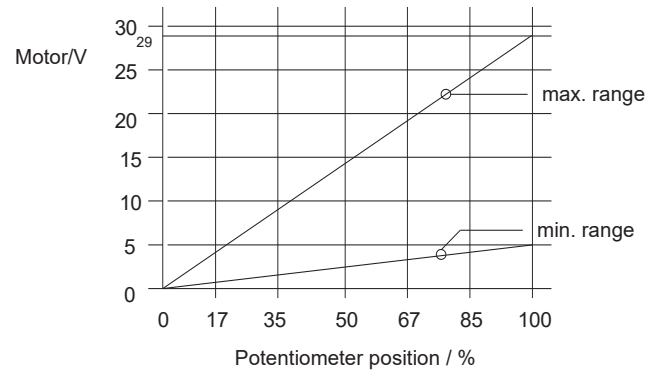
## NOTES

1. Measured at 50°C.
2. Peak current sustainable for 10 seconds.
3. Fuse max. current 6.3 A.

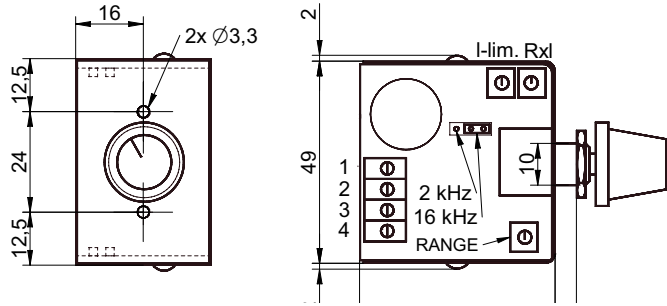
## WIRING DIAGRAM



## VOLTAGE VS POTENTIOMETER GRAPH



### DRAWING (mm)



### PHOTO



### MODEL NO. DESIGNATION

DPWM - Max. power

Example: DPWM-200

### ACCESSORIES



● C = customizations are offered on demand even for smaller quantities. Typical customizations are indicated with a green dot at column end. Please contact us for any customization request.

### DC MOTOR SPEED CONTROLLER DATA C

Supply voltage	V	10 to 35
Overvoltage limit	V	38
Undervoltage limit	V	10
Startup voltage	V	11
No load current	mA	20
Nominal current <sup>1</sup>	A	20
Peak current <sup>2</sup>	A	30
Short circuit protection <sup>3</sup>		External fuse
Power losses <sup>4</sup>	W	5   4
Current limit adjustment	A	1 to 30
PWM frequency	kHz	2   16
Max. motor cable cross-sectional area	mm <sup>2</sup>	2.5
Operating temperature	°C	-20 to 60
Weight	g	85
Temperature limit	°C	90

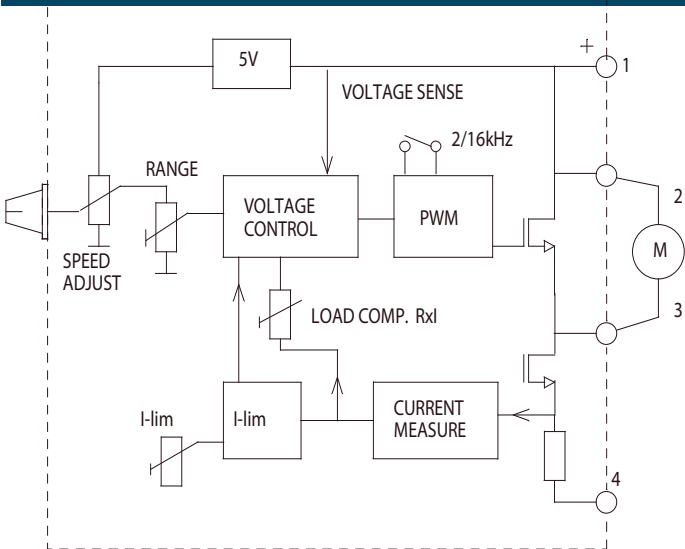
### DC MOTOR SPEED CONTROLLER FEATURES C

Power range	W	30 to 200
Compatible motor		Brushed DC motor
Efficiency	%	90
EMC		EN50081-2   EN50082-2

### NOTES

1. Measured at 50°C.
2. Peak current sustainable for 10 seconds.
3. Fuse max. current 30 A.
4. 5 W at 20 A and 16 kHz, 4 W at 20 A and 2 kHz.

### WIRING DIAGRAM



### VOLTAGE VS POTENTIOMETER GRAPH

