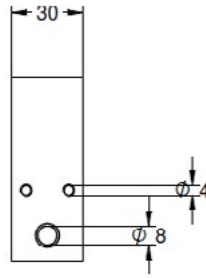
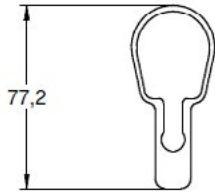


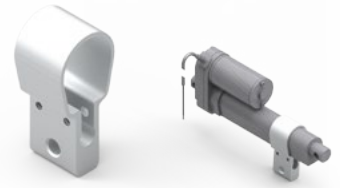
Linear Actuator Accessories

CLAMP (ALA-22)

DRAWING (mm)



PHOTO



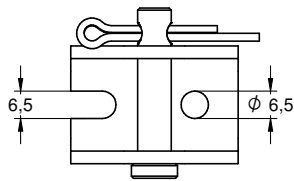
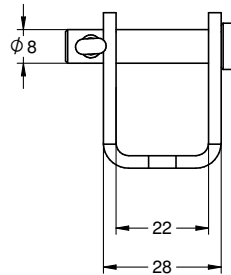
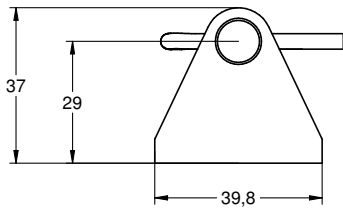
Total weight: 50g

COMPATIBILITY

DLA

MOUNTING BRACKET (ALA-12)

DRAWING (mm)



PHOTO



Total weight: 75g

MAX. LOAD

3000N

NOTE: the max. static load of some DLB actuators exceed the max. load of the mounting bracket.

COMPATIBILITY

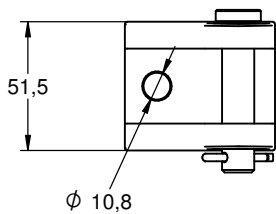
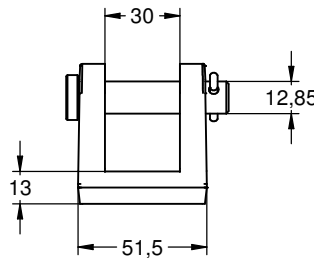
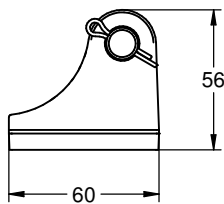
DLA, DLB

MATERIAL

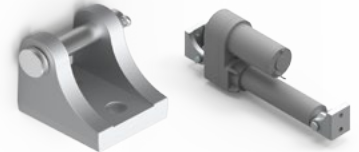
Mounting bracket: SPCC
Bolt: Carbon steel
Pin: Carbon steel

MOUNTING BRACKET (ALA-13)

DRAWING (mm)



PHOTO



Total weight: 550g

MAX. LOAD

17000N

COMPATIBILITY

DMA

MATERIAL

Mounting bracket: Forged steel
Bolt: Medium carbon free cutting steel
Pin: General mild steel