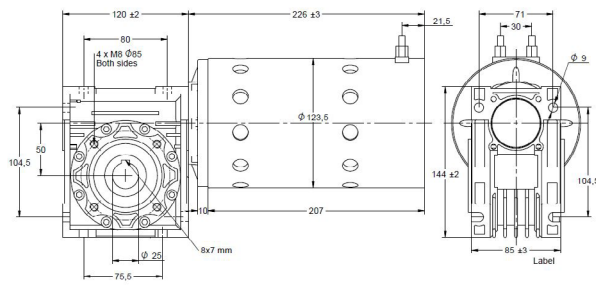
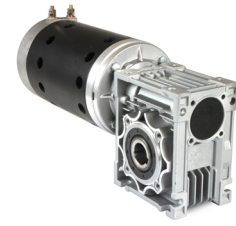


WHD123224 / Ø 123mm / 421W / 421W

DRAWING (mm)



PHOTO



MODEL NO. DESIGNATION

WHD123224 - VOLTAGE - REDUCTION

Example: WHD123224-12-10

ADDITIONAL

GEAR MOTOR DATA

Reduction	10:1	15:1	20:1	30:1	40:1
Nominal torque 12 V (Nm) *	13	16	21	32	41
Nominal speed 12 V (rpm) *	202	135	101	67	50
Nominal torque 24 V (Nm) *	13	16	21	32	41
Nominal speed 24 V (rpm) *	202	135	101	67	50
Length (mm)	344	344	344	344	344
Weight (kg)	14	14	14	14	14

* Nominal speed and nominal torque have a tolerance of ± 15%

GEAR HEAD DATA

Reduction	10:1	15:1	20:1	30:1	40:1
Max. continuous torque (Nm)	24	34	39	49	58
Intermittently permissible torque (Nm)	34	44	49	58	68
Efficiency (%)	66	55	53	52	51
Weight (kg)	3.5	3.5	3.5	3.5	3.5

GEAR MOTOR FEATURES AND STANDARD DATA

	STANDARD	CUSTOMIZATION OPTIONS
Type	Worm gear brush dc gear motor	
Gear angle	Hollow shaft	
Motor type	Iron core, brush commutation	Winding parameters
Motor brush type	Carbon brushes	
Motor terminals	Screw bolt terminal	Wiring harnesses, cables, connectors
EMC filter	No	Yes
Gear	Metal	
Bearing	Ball bearing	
Shaft	Hardened stainless steel	Dimensions
Environmental protection	IP00	
Operating temperature	-10-...+60 °C	- 40-...+60 °C
RoHS compliance	Yes	
CE label	No	Yes
UL approval	No	Yes
UL approval	No	Yes

MOTOR DATA

Nominal voltage (V)	12	24
No load speed (rpm)	2400	2400
No load current (A)	5.5	2.5
Nominal speed (rpm)	2020	2020
Nominal torque (mNm)	1990	1990
Nominal current (A)	43	22
Stall torque (Nm)	8.2	8.2
Starting current (A)	262	131
Output (W)	421	421
Length (mm)	224	224
Weight (kg)	10.5	10.5